

**e-STUDIO3508LP**

**e-STUDIO4508LP**

**e-STUDIO5008LP**

## Product brochure

---

- > The world's first monochrome multifunction systems with erasable print function.
- > A unique hybrid printing technology, one single device prints regular as well as reusable prints, which saves paper.
- > Equipped with innovative features for modern document workflows.
- > Designed for businesses that want to combine ecology, economy and efficiency.



# CONNECT, INTEGRATE, SIMPLIFY AND REUSE

Toshiba's hybrid technology combines conventional printing with erasable printing allowing you to reuse paper over and over again. One single device easily connects, integrates and simplifies your workflows — and also helps to save valuable resources.

At Toshiba, we are dedicated to serving our customers and committed to the future of our planet. This all comes together under our promise of Together Information.

Monochrome printing has never been this green.

**The world's first monochrome MFP  
with erasable print function.**



# EVERYTHING YOU NEED IN ONE SYSTEM

## Ecology

The idea of a paperless office has been around for more than 40 years, yet even modern business workflows still require a certain amount of documents to be printed. Toshiba now has an innovative solution for companies that want to be ecological and still be economical and efficient. Our unique hybrid printing technology offers everything you would expect from a state-of-the-art multifunction printer (MFP) and more: You can now even reuse the paper.

## Economy

One single system can print in regular black as well as in erasable blue. You can use the Hybrid MFP just like any other monochrome device to print in black and can choose from a variety of finishing options to ensure you have a system which covers all your needs. Our erasable blue toner allows you to reuse the paper you have printed on, so that you can use less paper, without having to print less. Reducing paper usage will save natural resources, reduce your company's carbon footprint and also help you save money.

## Efficiency

Driven by Toshiba's e-BRIDGE controller the e-STUDIO5008LP series will boost your productivity. It provides ease-of-use and ensures that the device is capable of adapting to your document workflows. Whether you need to connect to 3rd party solutions or simply want to optimise your internal processes, the Toshiba Hybrid MFP is there to help you enhance your overall efficiency.



## KEY FEATURES

- > A unique monochrome system with a speed of up to 50 pages per minute (ppm) and up to 35 ppm in erasable blue ensures the Hybrid MFP can handle even large jobs effortlessly.
- > A customisable, tablet-like user interface, gives easy access to the print, scan, copy, fax and erase functions.
- > Outstanding image quality you can rely on. Whether you use black or erasable blue toner, the result will always be the same: impeccable documents.
- > The optional Dual Scan Document Feeder can hold up to 300 sheets while processing documents at speeds of up to 240 images per minute.
- > Industry leading data security thanks to features such as the self-encrypting Toshiba Secure HDD and further optional security functions for IEEE2600.2 compliance.



# OUR BEST TECHNOLOGY TO ENHANCE YOUR BUSINESS

Optimising workflows to get the most out of available resources has become essential for businesses who want to be successful. We have designed our Hybrid MFP to offer you all features you need to be productive and efficient. But there's more: we have added a unique erasable print function, which can be selected in the printer driver just like any other setting.

## Connect

Having access to your documents at anytime is becoming increasingly important. We have made sure you get what you want, whenever you want and wherever you want.

- > **Multi Station Print\*** allows you to send print jobs from your computer and retrieve them at any convenient MFP by authenticating at that device, e.g. by swiping your badge.
- > **Cloud printing** ensures you have access to your documents, no matter where you are. Our embedded apps let you send your documents directly to, or print them from Microsoft OneDrive, Google Drive and Dropbox.
- > **Mobile printing** gives you the flexibility to print directly from your mobile device via AirPrint, Google Cloud Print, Mopria Print Service or our Toshiba e-BRIDGE Print & Capture app. With an optional module which activates the Wi-Fi as well as the Bluetooth feature, you can easily connect mobile devices directly with the MFP.

## Integrate

The Hybrid MFP incorporates our latest e-BRIDGE technology. This makes it easy to integrate the system into your existing IT infrastructure and helps administrators to work more efficiently. The open platform architecture also enables the creation of customised workflows, which simplifies complex scanning, archiving and other document management tasks.

## Simplify

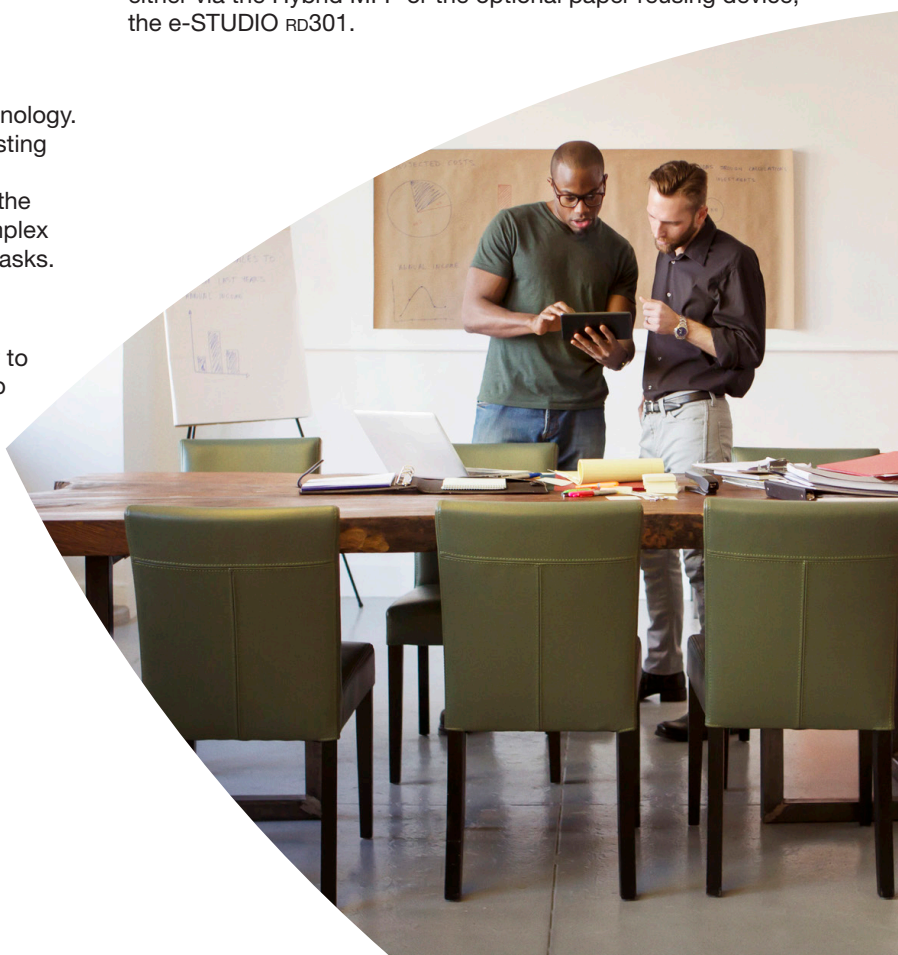
We strongly believe that good technology must be easy to use. The large tablet-like screen with an embedded web browser is easy to use and is customisable to meet your needs. It gives direct access to all functions of the MFP and increases the efficiency of the users.



Toshiba's Hybrid MFP - all the features you need in one unique system.

## Reuse

Toshiba's Hybrid MFP comes with a unique feature: paper can be reused thanks to the erasable blue toner, which has a positive impact on the environment. The erasing can be done either via the Hybrid MFP or the optional paper reusing device, the e-STUDIO RD301.



# PRINTING HAS NEVER BEEN THIS GREEN

## How does it work?

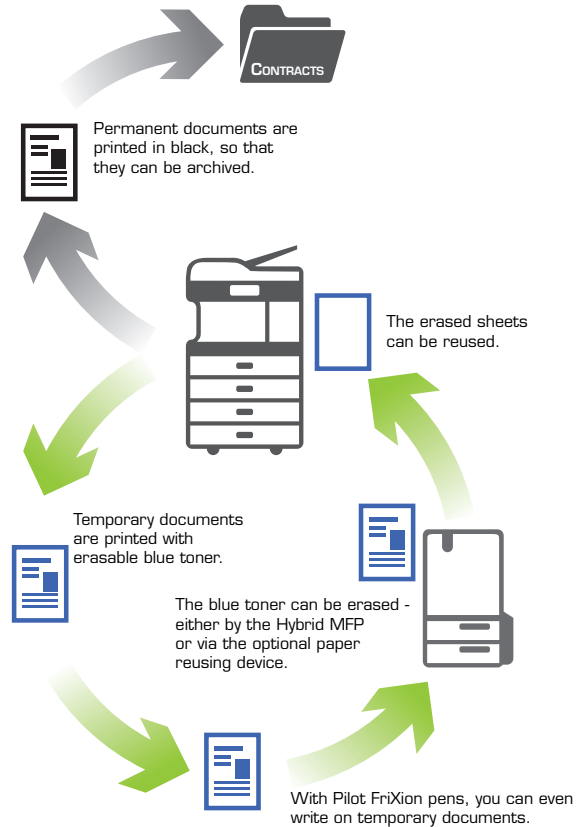
Very often we print documents, which are only intended for temporary use, e.g. to proof-read a document, meeting agendas, or as a reminder to do something. For these cases Toshiba's hybrid system gives you the ability to select the erasable blue toner, so that when you are finished with a document, you don't have to throw the paper away, but can delete whatever was printed on it and reuse the sheet. To make it easier rule-based printing can be activated in the printer driver. This allows you to define multiple rules for the printer driver to then automatically select the blue toner e.g. for all e-mails and faxes as these type of documents are usually intended for temporary use.

To easily track how much you have already saved the e-BRIDGE Paper Reuse Report generates reports that calculates your paper reduction, the average usage of paper, etc. to show your environmental contribution at a glance.

## How can the toner be erased?

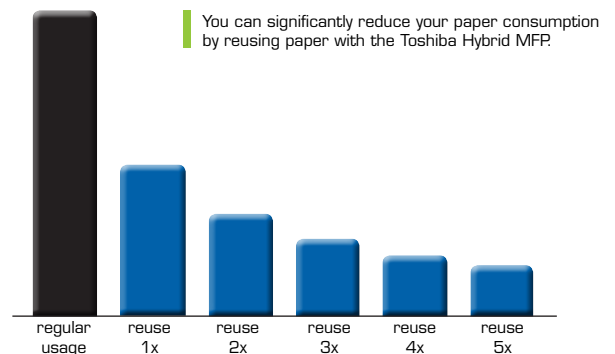
The Hybrid MFP itself is capable of erasing the toner. Simply place the used paper into the designated paper cassette and start the process. The blue toner will be erased and you can then place the erased sheets back into the cassette of the MFP to print on it again.

Alternatively, you can use the optional e-STUDIO RD301 — an erasing unit with advanced features. Not only does it erase at a speed of up to 30 ppm, it also sorts the paper into reusable and non-reusable paper. Additionally, it can also digitise documents for electronic archiving before erasing the toner.



## What is the benefit?

Assuming that you use a sheet of paper five times (i.e. print once and reuse it four times) and you print 4,000 erasable pages per month, you can reduce paper consumption by up to 80%. This means that after five years you will have saved almost 200,000 sheets of paper. In other words: The same amount of paper which you would usually use in one year, will now last five years.



Besides saving costs for paper (purchase, storage, distribution and disposal) there is also a significant environmental benefit as you automatically reduce the carbon emission and water consumption, which is generated during paper production.

# SPECIFICATIONS

## General

<b>Print &amp; Copy Speed</b>	Monochrome: 35/45/50 ppm (A4) 18/22/25 ppm (A3) Erasable Blue: 35/35/35 ppm (A4) 18/18/18 ppm (A3)
<b>Erase Speed</b>	Cassette: 17.5 ppm (A4) 8.5 ppm (A3) Bypass: 17.5 ppm (A4) 8.5 ppm (A3)
<b>Warm-up Time</b>	Approx. 22/26/26 seconds from low power mode
<b>Paper Size &amp; Weight<sup>1)</sup></b>	Cassettes: A5R-A3, 60-256 gsm Bypass: 100 x 148 mm-A3, 60-256 gsm
<b>Paper Capacity</b>	2x 550 sheets (Cassettes) <sup>2)</sup> , 1x 100 sheets (Bypass) <sup>3)</sup> Maximum 3,200 sheets
<b>Inner Output Tray</b> (virgin/reusable paper)	With Bridge Kit: 150/120 sheets Without Bridge Kit: 400/320 sheets
<b>Automatic Duplex<sup>1)</sup></b>	A5R, A4, A4R, A3 and other standard formats, 60-256 gsm
<b>Controller Type</b>	Toshiba e-BRIDGE Next
<b>Control Panel</b>	22.9 cm (9") Multi-Touch Colour Panel
<b>Memory</b>	Toshiba Secure HDD 320 GB <sup>4)</sup> , 4 GB RAM
<b>Interface</b>	10Base-T/100Base-TX/1000Base-T, High Speed USB 2.0, WLAN <sup>5)</sup> (IEEE802.11b/g/n), Bluetooth <sup>5)</sup> , Wi-Fi Direct <sup>5)</sup>
<b>Dimensions &amp; Weight</b>	585 x 640 x 787 mm (W x D x H), ~73 kg

## Print

<b>Resolution</b>	600 x 600 dpi, 5 bit, 1,200 x 1,200 dpi, 2 bit (equiv. 3,600 x 1,200 dpi) with PostScript driver
<b>Page Description Language</b>	PDF, PCL5e, PCL5c, PCL6 (PCL XL), XPS and PostScript 3 compatible
<b>Supported Systems</b>	Windows 10/8.1/7/Server 2008 (32/64 bit), Windows Server 2016/Server 2012/Server 2012 R2/ Server 2008 R2 (64 bit), Mac OS X 10.6.8-10.12, Linux/ Unix, Citrix, Novell SLES, SAP, AS/400
<b>Network Protocols</b>	TCP/IP (IPv4/IPv6), IPX/SPX, EtherTalk, NetBios over TCP/IP
<b>Toner Modes</b>	Erasable Blue, Monochrome
<b>Mobile Printing</b>	e-BRIDGE Print & Capture, AirPrint, Mopria Print Service, Google Cloud Print
<b>Print Functions</b>	Universal Printer Driver, Driver Templates, Driver plug-ins <sup>6)</sup> , Print from USB, Hold print, Tandem printing

<sup>1)</sup> Paper weight for Erasable Blue mode: 64-80 gsm.

<sup>2)</sup> If cassette is used for reusable paper, paper capacity of cassette is max. 400 sheets.

<sup>3)</sup> If bypass is used for reusable paper, paper capacity of bypass is max. 40 sheets.

<sup>4)</sup> 1 GB = 1 billion bytes; the actual formatted capacity is less. Available capacity will also be less if software applications are pre-installed.

<sup>5)</sup> Optional

<sup>6)</sup> Finishing functions are not available when printing in Erasable Blue. Paper capacity for reusable paper differs.

## Scan

<b>Resolution</b>	Maximum 600 x 600 dpi
<b>Scan Speed</b>	Reversing Automatic Document Feeder <sup>5)</sup> : up to 73 ipm (300 dpi) in colour and monochrome
	Dual Scan Document Feeder <sup>5)</sup> : up to 240 ipm (300 dpi) in colour and monochrome
<b>Scan Modes</b>	Auto-Colour (ACS), Colour, Greyscale, Monochrome
<b>File Formats</b>	JPEG, Multi/Single Page TIFF/XPS/PDF, Secure PDF, Slim PDF, PDF/A, Searchable PDF <sup>5)</sup> (and other formats like DOCX, XLSX) <sup>5)</sup>
<b>Scan Functions</b>	WS Scan, Scan to USB, Scan to E-Mail, Scan to File (SMB, FTP, FTPS, IPX/SPX, Local), Meta Scan <sup>5)</sup> , OCR scan <sup>5)</sup> , Scan to Box (e-Filing), WIA, TWAIN

## Copy

<b>Resolution</b>	Scan: 600 x 600 dpi Print: 600 x 600 dpi, 2,400 (equiv.) x 600 dpi with smoothing
<b>First Copy Output Time</b>	Monochrome: Approx. 5.9/4.4/4.4 seconds Erasable Blue: Approx. 7.8/7.8/7.8 seconds
<b>Zoom</b>	25-400% (Platen), 25-200% (RADF/DSDF) <sup>5)</sup>
<b>Copy Modes</b>	Text, Text/Photo, Photo, Blue Original
<b>Copy Functions</b>	Electronic Sort, Rotate Sort, ID Card Copy, Edge Erase, 2-in-1 / 4-in-1 mode

## Fax<sup>5)</sup>

<b>Communication</b>	Super G3, G3 - (opt. 2 <sup>nd</sup> line), Internet Fax T.37
<b>Transmission Speed</b>	Approx. 3 seconds per page
<b>Compression</b>	JBIG, MMR, MR, MH
<b>Fax Memory</b>	1 GB Transmission/Reception
<b>Network-Fax</b>	Driver for Windows 10/8.1/7/Server 2008 (32/64 bit), Windows Server 2016/Server 2012/Server 2012 R2/ Server 2008 R2 (64 bit)
<b>Incoming Fax Routing</b>	To shared folders (SMB, FTP, IPX/SPX), E-Mail, e-Filing

## System & Security

<b>Device Management</b>	e-BRIDGE Fleet Management System <sup>5)</sup> , TopAccess for remote administration and configuration
<b>System Features</b>	e-Filing document server for secure storage, Document distribution and Print-on-Demand (1 public box, 200 user boxes), 12,060 one-touch templates for storage of personalised settings or workflows, Scan/Fax Preview, Rip-while-Print, e-BRIDGE Open Platform <sup>5)</sup> , Embedded Web Browser, Job Skip, Erasing of Original Blue Toner
<b>Accounting &amp; Security</b>	Role Based Access, LDAP support, 1,000 department & 10,000 user codes, Card Reader <sup>5)</sup> , Private print, Standard data encryption with Toshiba Secure HDD, Data Overwrite Enabler <sup>5)</sup> , IP and MAC address filter, Port filter, Support of SSL and IPsec <sup>5)</sup> protocols, IEEE802.1x support, IEEE2600.2 compliant <sup>5)</sup> , Scan to Secure PDF

# OPTIONS

## e-STUDIO RD301

Paper Reusing Device to scan, erase and sort  
100-sheet capacity (Document feeder)  
400-sheet capacity (Re-usable paper cassette)  
100-sheet capacity (Rejected paper cassette)  
A5R-A4R, 64-80 gsm

## REVERSING AUTOMATIC DOCUMENT FEEDER

100-sheet capacity, A5R-A3, 35-157 gsm

## DUAL SCAN DOCUMENT FEEDER

300-sheet capacity, A5R-A3, 35-209 gsm

## PAPER FEED PEDESTAL<sup>1)2)</sup>

550-sheet capacity (1 Cassette)  
A5R-A3, 60-256 gsm

## DRAWER MODULE<sup>1)2)</sup>

For Paper Feed Pedestal  
550-sheet capacity (1 Cassette)  
A5R-A3, 60-256 gsm

## LARGE CAPACITY FEEDER

2,000-sheets capacity, A4, 64-105 gsm  
Not for reusable paper

## INNER FINISHER<sup>®</sup>

2 trays, 600-sheet capacity  
50-sheet multi-position stapling  
A4R-A3, 60-105 gsm (stapling mode)

## MULTI STAPLE FINISHER<sup>®</sup>

2 trays, 2,250-sheet capacity  
50-sheet multi-position stapling  
A4R-A3, 60-105 gsm (stapling mode)

## SADDLE-STITCH FINISHER<sup>®</sup>

2 trays, 3,250-sheet capacity  
50-sheet multi-position stapling  
5-sheet center folding  
Saddle-stitched booklets of up to 60 pages  
A4R-A3, 60-105 gsm (stapling mode)

## HOLE PUNCH UNIT<sup>®</sup>

Available in 2 holes (E), 4 holes (F)

## PLATEN COVER

## DESK

## ENVELOPE DRAWER

## JOB SEPARATOR

## FAX BOARD

## WIRELESS LAN / BLUETOOTH MODULE (incl. Wi-Fi Direct)

## e-BRIDGE ID-GATE

## HARD DISK DRIVE 320 GB<sup>®</sup>

## ACCESSORY TRAY

## PANEL TEN-KEY OPTION

## WORK TRAY

## DATA OVERWRITE ENABLER

## IPsec ENABLER

## EMBEDDED OCR ENABLER

## MULTI STATION PRINT ENABLER

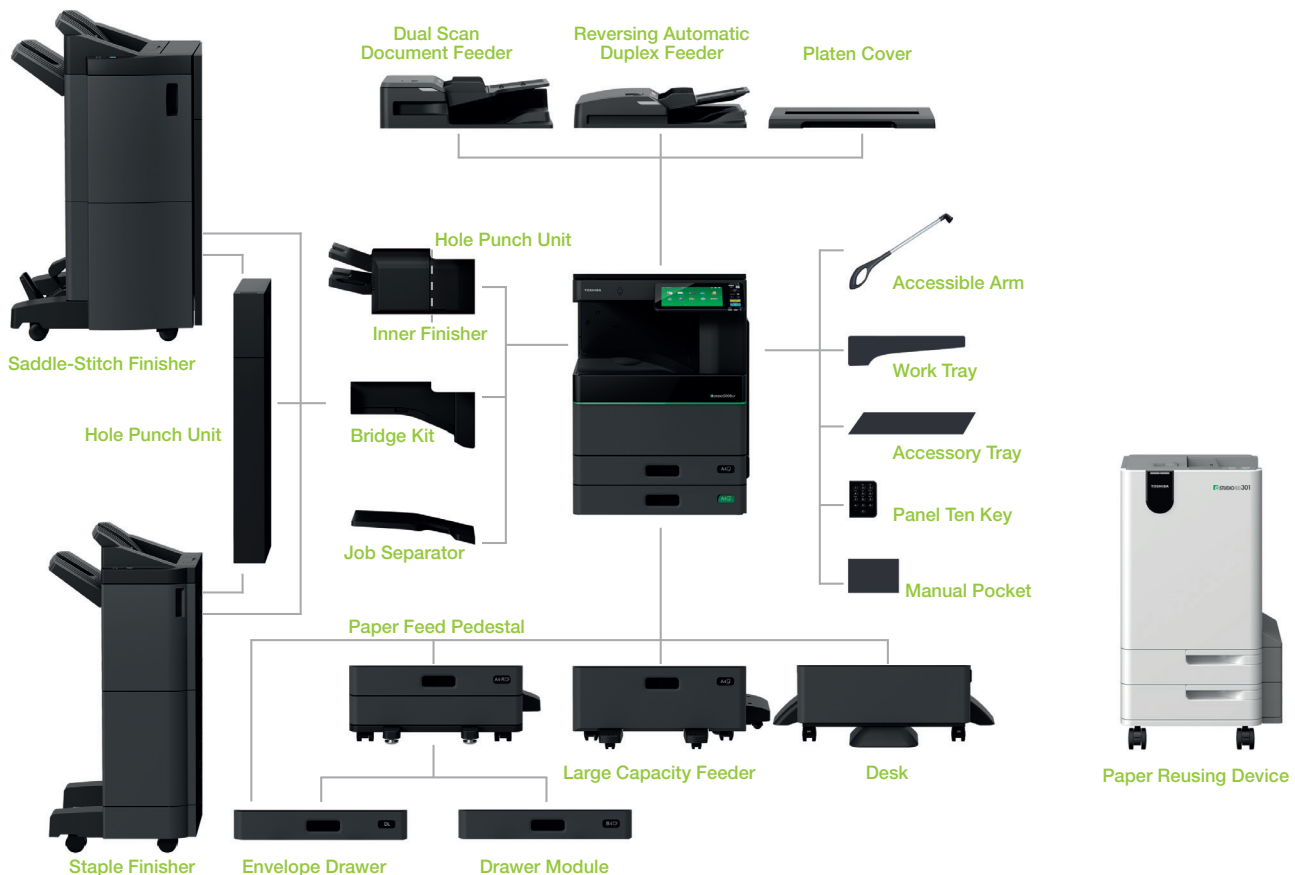
## HARD COPY SECURITY KIT

## META SCAN ENABLER

## UNICODE FONT ENABLER

## ACCESSIBLE ARM

e-STUDIO5008LP series:



## About Toshiba TEC

Toshiba TEC UK Imaging Systems LTD is part of the globally operating Toshiba TEC Corporation, active in various high-tech industrial sectors.

Toshiba TEC Corporation is a leading provider of information technology, operating across multiple industries. With headquarters in Japan and over 80 subsidiaries worldwide, Toshiba TEC Corporation helps organisations transform the way they create, record, share, manage and display information.

For more information please contact us:

## TOSHIBA TEC UK IMAGING SYSTEMS

### Telephone

+44 (0)843 2244944

### Email

info@toshibatec.co.uk

### Website

www.toshibatec.co.uk



### Speak to us

T: 0800 046 1332

E: info@insightsystems.co.uk

W: www.insightsystems.co.uk

**Together Information is Toshiba's vision for how people and organisations create, record, share, manage and display ideas and data.**

**It is based on our belief that the most successful organisations are those that communicate information in the most efficient way.**

**We make that possible through an integrated portfolio of industry-specific solutions, all of which reflect Toshiba's commitment to the future of the planet.**